

Titanic Numbers... Really 'Titanic' Numbers!

ti-tan-ic, adjective \tī tǎnnik \
 : very large or strong: having extraordinary physical strength or size
 : powerful: of extraordinary power, scope, or impressiveness

And so the Titanic exhibit lived up to its name. **It was titanic!**

Attendance for the length of the run, March 23 - October 27, 2013, was **79,295**. Museum attendance for that same period, which includes Titanic and the Museum only (non-Titanic) visitors was **174,765**. That was a 42% increase over the same time period last year. Another interesting fact was that Titanic's closing weekend attendance of **2,505** was greater than the opening weekend of **2,068**. And Membership numbers were also titanic, going from about 2,600 before the exhibit opened to 4,482 by the exhibit's close.



I cannot thank our volunteers enough for all of the hard work in making this exhibit possible. By covering 105 volunteer shifts each week, the volunteers saved the Museum tens of thousands of dollars in staffing costs required to host the exhibit.

I hope that you all have a **Wonderful Holiday Season and a Happy New Year!**

And if you're wondering what's next...

Let me give you a hint.

gross, adjective \'grōs\
 : very obvious or noticeable
 : rude or offensive
 : very disgusting



-Charlie Walter
 Executive Director

December FOP Meeting

The next Friends of Paleontology meeting will be Monday, December 16, at 7 pm in the museum multi-purpose room. Our speaker will be Tom Suazo. Tom's topic will be *How Paleontology Works with Other Sciences*.

-Dick Yeck, VP Programs, FOP

Interim Paleontology Appointments

Amanda Cantrell has been named Interim Geosciences Collection Manager, replacing Justin Spielmann.

Tom Suazo has been named Interim Fossil Preparation Laboratory Manager. Tom replaces Larry Rinehart, who has retired.

-Lanois Neely, President, FOP

Grossology

See pages
 2, 14-15.





A Message from Barry Granoff, Our Volunteer Association President:

Hi, I'm Barry Granoff, and I need your help.

But first I'd like to tell you about the colossal success of the Titanic Exhibit:

Museum attendance for the exhibit run was over 79,000! The 105 volunteer shifts each week saved the Museum tens of thousands of dollars. YOU and your hard work made this exhibit possible!

And now that the Titanic has left the Museum, we will open a new exhibit, "Grossology," on Saturday, November 16, 2013.

This exhibit is expected to bring lots of visitors to the Museum (especially kids), and it's both educational and lots of FUN. This may not be every volunteer's cup of tea, but I'd like you to look at the Grossology document on Pages 14 - 15 of this newsletter--and I'd like to ask you to think about becoming a Grossology volunteer.



At least go through the exhibit, play with it, and let the kid-within enjoy it!

Thank you.

-Barry

Continuing Education Seminar

Exploring Space Science with our new Space Science Director.

January 7, 2014 Hall of Stars Exhibit 10:00 AM - 12:00 PM

SUMMARY: Meet Jim Greenhouse, the Museum's new Space Science Director and see some of the new exhibits. We'll meet in the Hall of Stars at 10 am for a brief demonstration, and then move into the planetarium to learn a little about the current night sky using digital projection technology. After a quick break, we'll continue on to the observatory for a safe look at the sun using our new solar filter (weather permitting). Snacks and social time will follow. (Please be aware that there will be no late seating after we go to the planetarium.)



Jim Greenhouse is the museum's new Space Science Director. He has managed four other planetariums around the country for the last 30 years. Originally from Amarillo, he has also lived in Dallas, TX; Memphis, TN; Macon, GA; and near Charlotte, NC.

Any comments or questions are welcome.
Note the special time for this event.

-Malcolm Siegel, msiegel51@yahoo.com 688-3716
MVA Continuing Education Committee

Revive Field Trips? Crowdsourcing?

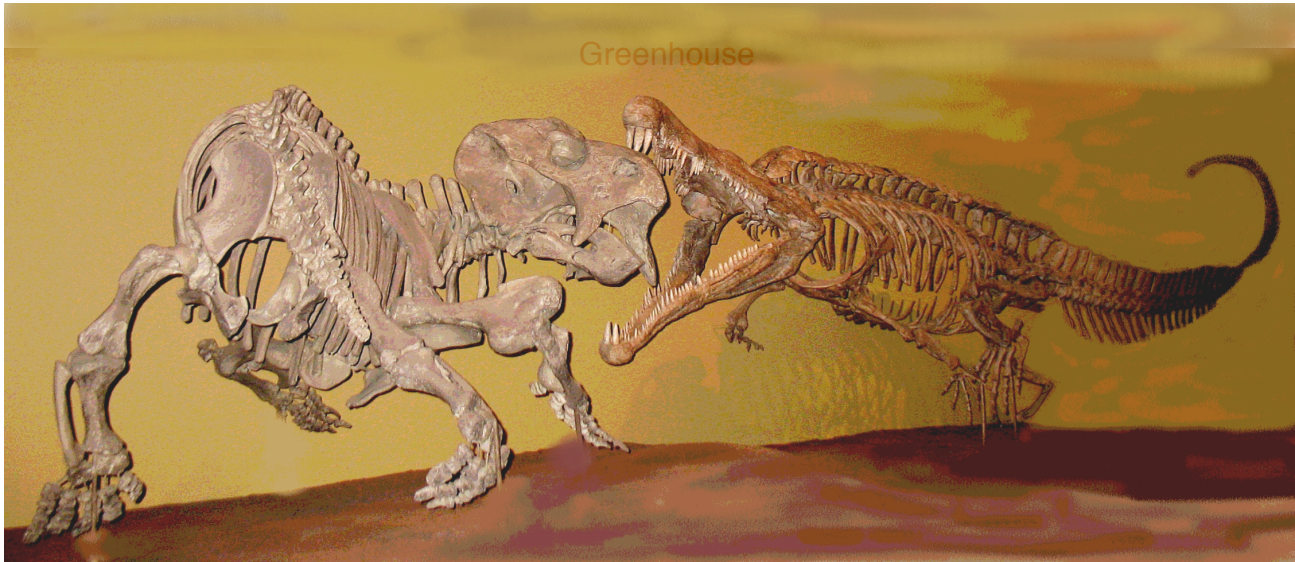
Have you been wishing that we had low cost volunteer field trips again? That would be great! I have a theory about volunteer groups that if we can get a small number of volunteers to each do a little, they all feel some ownership of a program. That's better than one person doing all the work and getting burned out. Our modern name for that is *crowdsourcing*!

Would you be willing to do a little to help resume field trips? If we could form a small group of volunteers who would each be responsible for one trip, it could work. One meeting could outline plans for several trips. The trips would most likely be on the basis of carpooling since access to vans and drivers has become problematic.

I am willing to provide a structure and help for such a group to get started, but then the group would need to function on its own. Can you be part of that "crowd" to get field trips going again?

If so contact Pat Robinson at pattitrek1@comcast.net or 343-0526.

Museum Holiday Graphic contributed by Susan Hunt



"Don't worry Two Dog Teeth, I just want to get close enough to wish you Happy Holidays."



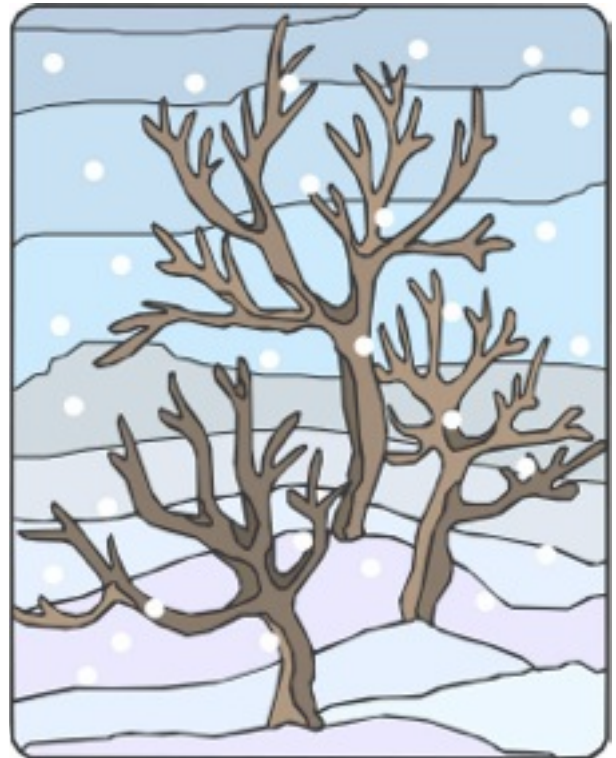
Retirement Party for Larry Rinehart

On October 23, 2013, a party was held to honor retiring Fossil Prep Lab Manager, Larry Rinehart. While still working full time, Larry began volunteering as a fossil preparator at the newly founded NMMNHS and later became the full time lead preparator. Following retirement at the end of September, Larry became a volunteer preparator once again.

The retirement party was sponsored by Friends of Paleontology (FOP) with Lannois Neely and Sheila Bednarski organizing food, decorations and invitations. No speeches, just good food and good fun spending time with Larry and his well-wishers.

-Mary Moore

See Photos Next Page





Dear Volunteers,

This is a copy of remarks made by our director Charlie Walter at the October 8, 2013, Volunteer Association Board Meeting. You will find his list of *Museum Foundation Support of many museum activities very illuminating.*

ADDENDUM TO MINUTES OF BOARD MEETING ON OCTOBER 8, 2013

Remarks by Museum Director Charlie Walter

1. The Foundation pays the credit card fees charged by companies when guests pay for their admission by credit card. The State does not pay these fees .
2. The Foundation paid the \$25,000 deposit and insurance liability and indemnification costs for the *Titanic!* exhibition. The State will not pay for the liability insurance. It also paid \$11,166 to extend the *Robot Dinosaur* exhibition and \$15,000 for marketing the *Titanic!* and *Robot Dinosaur* exhibits.
3. The Foundation pays \$52,700 for marketing the DynaTheater and another \$6,000 per year in general marketing.
4. It pays \$14,400 for the Directors Access Fund. This pays for travel, lunches with supporters and business people, etc.
5. It obtained \$130,000 in marketing donations for *Titanic!* (such as TV ads, billboards, banners, etc.).
6. The Foundation fronted \$198,000 in federal grants in 2013 for research conducted by the museum. The money is not paid in advance, and without the Foundation fronting the costs, the research could not be conducted. In the past it fronted \$217,000 in FY 2012 and \$260,000 in FY 2011. It's staff keeps the overhead costs for managing the grants in accordance with federal regulations to 20%, which is very good compared to other places where the overhead costs can go up to 60%.
7. It contributes up to \$5,000 for the Volunteer Luncheon awards event each year.
8. It manages the wiring of funds generated by the theater and exhibits such as *Titanic!*, both to the State and to the exhibit company, doing so within 24 hours as required by the State!
9. It runs the theater, cafe, and store, providing a portion of the net profits to the museum and the State.
10. It manages all deposits and wire transfers for the Museum.
11. It pays for a lobbyist in Santa Fe who contacts members of the State Senate and House on behalf of the museum to obtain funds for the museum.
12. Volunteers pay \$8 for a museum membership (as opposed to the normal \$35 membership fee) and a portion of the \$8 goes in to the Volunteer Association Endowment, which is managed and invested by the Foundation. [Editor's note: Volunteers pay \$8 to the Volunteer Association and \$8 to the Foundation for Museum membership.] The endowment is now at \$37,900+. Once it reaches \$50,000, funds in excess of that amount can be used by the Volunteer Association for various projects/ purposes. The endowment grows primarily through investments and gifts from members and others. It was proposed that Diana from the Foundation give a talk concerning the endowment.

Latest Dinosaur Discoveries in the Cretaceous of the San Juan Basin

Stemming from a BLM funded paleontological survey in July of 2011, the title of the September 16, 2013, FOP talk by Interim Geosciences Collections Manager Amanda Cantrell laid claim that her current dig is the most recent major prospecting effort by the New Mexico Museum of Natural History and Science in the Bisti-de-na-zin Wilderness. Amanda organized her talk into eight segments:

1. **Where is the Bisti/De-na-zin Wilderness?** It's located 50 miles south of Farmington or about 200 miles northwest of Albuquerque on Highway 550. The wilderness is a 41,000 acre federally protected area with numerous washes, three of which, the Hunter, Alamo and Dana-zin, were of interest.



One to watch out for: the New Mexico state insect, the tarantula hawk

2. **What are the rocks like?**

The rock formations in the area consist of the fully marine Pictured Cliffs Sandstone and Lewis Shale, the dinosaur producing terrestrial sandstones, mudstones and coals of the Fruitland and Kirtland Formations and the Ojo Alamo Formation which spans the Mesozoic/Cenozoic boundary.

3. **What was the world like during the Cretaceous?** Heightened mid-ocean-ridge activity during the Late Cretaceous time period caused temperatures to be warm and sea levels to be high. In North America the Western Interior Seaway would have

connected the Gulf of Mexico to the Arctic Sea. The rocks expressed in the Bisti/De-na-zin area today represent this seaway as well as the rivers and swamps that would have surrounded it. The riparian and swampy environments in this area at the time would have been the perfect place for dinosaurs to live.

4. **Who was on the team?** The original team comprised Dr. Spencer Lucas, Dr. Bob Sullivan, Amanda Cantrell, Tom Suazo and Josh Fry. Recent efforts have been aided by Larry Rinehart, Charles Turner, Darren Raspa and a visiting paleontology intern from Italy, Francesco Zuffi.

5. **What was it like in the field?**

The survey took place in July, the hottest month of the year in the Bisti/De-na-zin Wilderness. Having enough water to sustain camp and for plaster jackets was the biggest hurdle. Unpredictable rainstorms filled washes and made prospecting or recovering fossils difficult. Hungry dogs and llamas from the surrounding Navajo Reservation visited camp. The crew spotted the New Mexico state insect, the tarantula hawk wasp, which has the second most painful sting of any

insect. Many other creepy crawlies like mole crickets, centipedes and scorpions were found in the field.

6. **What did they find?** An assortment of fossils including the disarticulated skeleton of the first juvenile Pentaceratops known to science, the skull and first cervical ring of a new species of Ankylosaur, an isolated Ankylosaur cervical ring, two tyrannosaur teeth, a turtle shell and many other fossils!

-Dick Yeck, FOP VP for Programs

Fossils in the Cloud

The speaker at the 21 October 2013 meeting, Dr. Bruce MacFadden, curator of vertebrate paleontology at the Florida Museum of Natural History at the



University of Florida, is known for his work on fossil horses. On this occasion, however, a rather enigmatic topic led to a quite different talk.

The title pertains to the development of a massive database of paleontology called the FOSSIL Project. It is intended to enable paleontologists, universities, science and fossil clubs, and individuals who are researching extinct fauna or flora access to an order of magnitude more data. Smaller versions such as DropBox and Google Cloud are prototype

systems extant now. Everything would be digital including photos and maps. Locations on the earth would be in GPS with an accuracy of about 10 meters. As needed, confidential "Dark data" would be protected. The idea is to have "Big Data" that would link over 500 museums and other collections in the US, and would later expand to collections worldwide.

The National Science Foundation has invested 100M dollars to date to define the system. The concept would pertain to other groups worldwide with common interests in cyber-leaning communities. As for paleontology, there are at least 100 million specimens that would be available to government agencies, scientists, teachers, fossil clubs and universities worldwide. Fossils could be analyzed, displayed and studied electronically without damage to the specimens. Museums could digitally display "not seen" specimens (out of site now due to space constraints) to the public. Everything would be electronic. The five-year goal is to bring universities and museums on line, share more ideas, increase public awareness and develop more fossil clubs. The concept is already growing in the GIS community.

Dr. MacFadden pointed out that many issues have to be addressed. Which in addition to money include protection of rare fossil sites, spoken language differences, and computer hackers. Technical issues include different computer operating systems, data bases structures and sizes, and communication capacity worldwide.

-Dick Yeck, FOP VP for Programs

MUSEUM ADULT AND FAMILY EDUCATIONAL PROGRAMS

DECEMBER 2013 – JANUARY
2014

DECEMBER

December 1 • First Sunday

December 5 • Lecture

Grand Canyon

December 11 • Curator's Coffee

Paleontology of the Panama Canal

December 21 • Starry Nights

Solstice

December 27 • Young Explorer's

Winter Day Camp

December 30 • Young Explorer's

Winter Day Camp

December 31 • Night at the Museum

New Year's Eve

JANUARY

January 2 • Young Explorer's

Winter Day Camp

January 3 • Young Explorer's

Winter Day Camp

January 23 • Exhibit Opening

*10th Anniversary Celebration -
Mars Opportunity Rover "A Decade on
Mars"*

January 23 • Lecture

*Mars Exploration Rover Update:
A Decade Roving on Mars*

January 25 • Starry Night

Mars



How Old is The Grand Canyon?

Karl Karlstrom, Ph.D.

Professor, Dept of Earth and Planetary
Sciences, UNM

Thursday, December 5 • 7:00-8:30 pm

The Grand Canyon is one of the world's premier geologic landscapes. Three series of rocks, representing different geologic times and processes, are visible in the canyon walls. New research, by a New Mexico geologist, is helping to define when and how the canyon we know today was formed.

Dr. Karl Karlstrom's research interests involve structural geology and tectonics, especially in the southwestern U.S. He has worked extensively on the geology of the Grand Canyon, made more than 50 river trips in the canyon, and helped create the Trail of Time exhibit for visitors to the canyon. He is the co-editor of Grand Canyon Geology: Two Billion Years of Earth's History. He received the Geological Society of America (GSA) Distinguished Service Award for his service to the geoscience community and is a Fellow of GSA. He received a B.S. at Northern Arizona University, and M.S. and Ph.D. from the University of Wyoming.

Held at the NMMNHS

1801 Mountain Rd. NW, Albuquerque, NM 87104
(505) 841-280

Visit: www.nmnaturalhistory.org

\$6 (\$5 members, \$4 students)

Purchase in advance online to guarantee your seats, go to www.NMnaturalhistory.org (online ticket fees may apply) or purchase tickets at the Admissions desk prior to the event. Doors open at 6:15 pm Questions: August Wainwright

email: programs.NMMNHS@state.nm.us

call (505) 841-2861

Volunteers are free... sign up in Lounge.

Mars Exploration Rover Mission Update: A Decade of Roving on Mars

Larry Crumpler, Ph.D.

Research Scientist • New Mexico Museum of Natural History & Science

Thursday, January 23 • 7:00 - 8:30 pm

This month is the 10th Anniversary of the NASA Mars Exploration Rover Mission. The mission just keeps getting better and better, and the Opportunity Rover continues to make new and fundamental discoveries. Dr. Crumpler has been a scientist on the Mission throughout its entire decade; it is always "standing-room only" in the DynaTheater when he talks about the latest mission results. Don't miss this presentation of the new information, images, and discoveries from the ongoing "21st Century Natural History Expedition" to the surface of Mars.

Dr. Larry Crumpler is Research Curator of Volcanology and Space Science at the New Mexico Museum of Natural History and Science. He is a scientist on the NASA Mars Exploration Rover Mission, served on HiRISE, part of the Mars Reconnaissance Orbiter mission, and is Co-I on an instrument proposal for the 2020 rover. He divides his time between planetary geological research and New Mexico volcanology. He continues to serve as "long-term planning lead" (LTP) for the daily telecons that define the ongoing activities of the Opportunity Rover; and he continues to have a great time being a "field geologist" on Mars. He received his M.S. in Geology from UNM, Ph.D. in Planetary Science from the University of Arizona, and is a Fellow of the Geological Society of America.

Held at the NMMNHS, 1801 Mountain Rd. NW, Albuquerque, NM 87104 841-280

Visit: www.nmnaturalhistory.org

\$6 (\$5 members, \$4 students)

Purchase in advance online to guarantee your seats, go to www.NMnaturalhistory.org (online ticket fees may apply) or purchase tickets at the Admissions desk prior to the event. Doors open at 6:15 pm. Questions: August Wainwright call (505) 841-286 or email: programs.NMMNHS@state.nm.us

Volunteers
free! Sign up.



Celebrate the Winter Solstice

December 21, 2013

6:30 - 9:30 pm

- Medieval music by Cantores Festivi
- Harp Music by Linda Kennedy
- Planetarium/Observatory
- Telescopes courtesy of The Albuquerque Astronomical Society
- Hibernation Information in the Naturalist Center
- Hands-on Activities about the Seasons and Sun

January 25, 2014 - Celebrate Mars and the Mars Exploration Rover Mission

6:00-9:00 pm

- Celebrate Mars and the Rover
- Hands-on Mars activities
- A short talk about Mars and the rover presented by Dr. Larry Crumpler, at 7 pm
- Look through a new exhibit that highlights the discoveries made by the rovers Opportunity and Spirit.
- Although Mars will not be visible in the sky that evening, our observatory will be open, (weather permitting) to magnify other celestial wonders
- Planet, Star and constellation tour in the planetarium at 8 pm

MARS
January 25!

\$8 (\$6 members & Seniors, \$4 children)

Purchase in advance online at www.NMnaturalhistory.org (online ticket fees may apply) or purchase at the Admissions Desk

Questions: August Wainwright
email: programs.NMMNHS@state.nm.us
call (505) 841-2861

SPACE SCIENCE SPECIAL EVENT

Mars Opportunity Rover 10th Anniversary Celebration January 23, 2014

Celebrate the 10th Anniversary of
the Mars Exploration Rover Mission!

Special expanded exhibit in the Space
Science Wing - **A Decade on Mars**
Images and panoramas of Mars Surface
taken by the MER Rovers

Free (with Museum Admission)

Evening Lecture January 23, 2014

Update on the Mars Rover Mission
by Dr. Larry Crumpler

Starry Night January 25, 2014

Mars...
Hands-on Activities
Observatory
Planetarium,
Special Short Talk about Mars

*(See detailed listings for the Lecture
and the
Starry Night Event)*

AND....Check out Larry Crumpler's
rover blog
"Field Notes from Mars" at
www.NMnaturalhistory.org for
information

SPECIAL EVENT

Nights at the Museum Presents New Year's Eve



Tuesday, Dec 31 • 8:30pm - 1:00 am

Ring in the new year at the Museum!! 18 yrs and above only
- dancing, cash bar 21+, guided tours, unique salsa bar.
Watch the ball drop in our planetarium as we stream
footage of Times Square. This is the place to be on NYE! All
proceeds from this event will benefit Museum Education
Scholarships.

\$15.00

Pre-registration suggested. Buy your ticket online, go to
www.NMnaturalhistory.org (online ticket fees may apply) or
purchase your ticket at the Admissions Desk.

CURATOR'S COFFEE

A Café Style Program

Join us for a casual discussion followed by a themed tour.
Limited to 15 people and includes coffee, light
refreshments, and Museum admission.

Paleontology of the Panama Canal Gary Morgan, Curator of Paleontology, NMMNHS

Wednesday, December 11 • 9:30 - 11:00 am

The Museum is involved in a major five-year National
Science Foundation (NSF) grant, thanks to Museum
Curator Gary Morgan. The grant to study the paleontology
of the Panama Canal region is part of a special NSF
program, called PIRE (Partnerships in International
Research and Education). The grant includes 50
researchers from around the world, with principal
investigators from Panama, Columbia, Florida, and New
Mexico.

CONTINUED ON PAGE 11



Birds of the Bosque del Apache Field Trip

Sunday January 26, 2014
10:00 am - 9:00 pm

Preview Talk Wednesday January 22 • 7pm-8pm

TRIP LEADERS:

Tish Morris,

Naturalist/Science Educator

Laurel Ladwig,

Birder/Photographer/Science Educator

Join us on a day-long journey to see migrating and year-round avian residents. There are always thousands of birds to see at New Mexico's own world-famous refuge south of Socorro. No experience necessary—come and join the fun!

We will tour the refuge after lunch, identify and watch the many species of birds, and visit some of the many observation decks. On the way home we will stop for a no-host supper.

Cost: \$40 for the field trip and lecture (members \$35).

The field trip is limited to 12 people. Transportation to and from the

Purchase in advance, Space is limited, go to www.NMnaturalhistory.org (online ticket fees may apply). Questions: August Wainwright call (505) 841-2861 email: programs.NMMNHS@state.nm.us

CURATOR'S COFFEE CONTINUED FROM PAGE 10

Gary's research involves study of the small Miocene age mammals that made Panama their home, including bats, dogs, cats, camels, horses and rhinos.

Gary Morgan is a curator of vertebrate paleontology at the New Mexico Museum of Natural History and Science. His primary area of interest is fossil mammals from the last 35 million years of geologic time. In New Mexico, he has worked on mammals from the Rio Grande Valley south of Las Cruces, cave deposits in Carlsbad Caverns National Park, horses and mammoths in the Gila National Forest, and fossils in Sandia Cave in the Sandia Mountains. He is one of five co-Principal Investigators on a major 5-year NSF grant to study the paleontology of the Panama Canal.

\$8 (10% discount for members and volunteers)

Pre-registration required. Limit 15 participants. To guarantee your place, register online, go to www.NMnaturalhistory.org (online ticket fees may apply)

Questions: August Wainwright

email: programs.NMMNHS@state.nm.us

call (505) 841-2861



Museum Exhibit Tours

Every Monday • 1:30 - 2:30 pm

Take a docent-led, fact-filled, fun, guided tour of the Museum exhibits. Limited to 14 participants ages 13 and up. Meet in the Atrium at the stadium seating.

Free (with Museum Admission)

No registration required. First-come, first served.

Questions: August Wainwright

email: programs.NMMNHS@state.nm.us

call (505) 841-2861

COMING UP THIS SUMMER

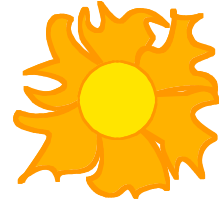


Family Fun on a River Run! Rafting the San Juan River

June 22-25, 2014

TRIP LEADERS:

Tish Morris, Naturalist/Science Educator;
Kristin Gunckel, Ph.D., Geologist/Educator



Join us for a family rafting adventure this summer! We'll float 26 miles between Bluff and Mexican Hat, Utah. Learn about the natural history of this river ecosystem, and the plants and animals of the area through games, stories and other fun activities. There will be lots of time for playing in and on the water.

For children 7 years and over with parent(s), grandparent(s), aunt(s) or uncle(s)—no experience necessary. Complete itinerary available.

Cost: \$715 adults, \$690 child under 12 (\$20 off for Museum members: \$695 adult/\$670 child)

Includes all food from dinner Day 1 through Lunch Day 4, expert staff, river guides, group equipment and supplies.

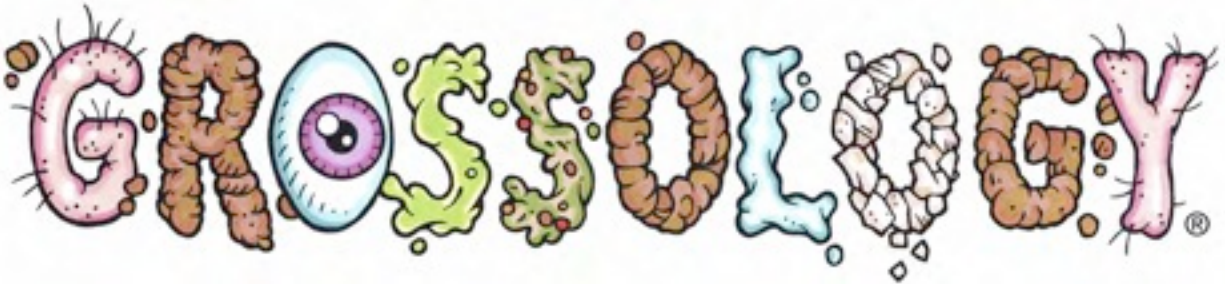
Families meet in Bluff, Utah on the evening of Sunday, June 22nd. Camping equipment may be rented.



Preregistration required. Registration BEGINS January 15, 2014. Space is limited. Go to www.NMnaturalhistory.org for information and registration.

Questions: August Wainwright call (505) 841-2861
email: programs.NMMNHS@state.nm.us

ADDENDUM



The (Impolite) Science of the Human Body



image: rsvpcalendar.blogspot.com

**Poop
Snot
Pee
Farts
Puke
Belching
Boogers
Zits**

You've probably been told that it's impolite to discuss smelly, stinky, slimy, mushy, oozy, crusty, scaly, icky, gross things in public. That was then. **But not any more!**

As a **GROSSOLOGY** volunteer, you'll laugh with the kids (and adults), as you play with the exhibits and explain the science behind the natural functions of our human bodies.



This hands-on, interactive, science-in-disguise exhibit is for kids and the mid-school kids that are inside each of us.

As a volunteer, you'll answer questions that kids might otherwise be afraid to ask, **AND** you'll help parents explain the reasons the body does what it does.

The unusual subject matter of the exhibits is both entertaining and educational.

The Visitors will be able to connect science with the everyday activities of their lives.



Administrative Information:

If there's a breakdown, call security (841-2829) from a cell phone or the Information Desk. If you cannot make a shift, call (841-2877) or email (doug.simon@state.nm.us) Doug Simon. If a shift replacement doesn't show up, ask an Atrium host to fill in. There must be at least one volunteer in the exhibit at all times.

Information for Volunteers

The most effective way to learn the ins and outs of the Grossology Exhibit is to PLAY with it! Read all the text, push buttons, pull levers, interact with the animatronic characters (*Burp Man*, etc.), walk through a giant nose, and watch the kids.

There's a work-in-progress binder in the Volunteers' Lounge, with useful hints and suggestions: most frequent questions from Visitors (with answers!), flash cards, what works and doesn't work, hands-on demonstrations, tour-guide suggestions, etc.

Books:

Branzei, Silvia, *Grossology*; Boyer, Crispin, *That's Gross!*; Rhatigan, Joe, *Gross Me Out!*; Branzei, Silvia, *Grossology and You*

Websites and Videos:

www.grossologytour.com

www.advancedanimations.com

www.youtube.com/watch?v=XNafnf-opOk

www.youtube.com/watch?v=RUYYPwMtQ_6k
events.nationalgeographic.com/media/files/

The VAN

The VAN is published bimonthly. There are six regular issues each year: *February-March*, *April-May*, *June-July*, *August-September*, *October-November* and *December-January* and an occasional *Special Issue*. The deadline for submitting articles or photographs for the next regular issue is always the fifteenth of the month prior. The deadline for the *February-March* issue, for example, will be January 15, 2014.

Please send items for the VAN to Louise Harris, VAN Editor, <louise@goingourway.net>, with a copy to Chris Sanchez DCA <chris.sanchez@state.nm.us> or Doug Simon DCA <doug.simon@state.nm.us>.

The VAN mission is to inform, engage, and enhance the experience of NMMNHS Volunteers, by acting as a vehicle of *continuing education*, keeping volunteers informed about the Museum, and relaying news of volunteers and their activities.

Your articles pertaining to the museum are most welcome. Articles may be edited for clarity and space limitations.

Editor Request: Please put the word "VAN" in every email title.
